

Linslade
Community Hall Newsletter,
bringing you the latest news of the
Community Hall Restoration and
associated events.

More Progress !

We are sure you are all aware that the next stage of the project is the task of refurbishing the 'cottage' at the rear of the main Hall .

The intention is to bring the standards of safety and amenity of the cottage up to a level which will make the new facilities suitable for letting to groups which, we cannot at present accommodate.

For most of this year we have been applying for Grant Funding to make this possible.

The main applications have been to the Landfill Operators, Biffa and Wren, for the large grants necessary for structural works.

These include: a new roof, stairs, interior layout, doors and windows etc.

We have received confirmation from one landfill operator that our Grant is now confirmed, and from our conversations with the other, we are assured that this too will be confirmed shortly.

These Grants will provide the funds needed to start the works, hopefully by mid-January 2012.

Most of the necessary works will not impinge on the Hall or its users.

There is however, a need to cut a hatchway through the back wall for use as the serving hatch for the new kitchen and we also need a doorway into the cottage area.

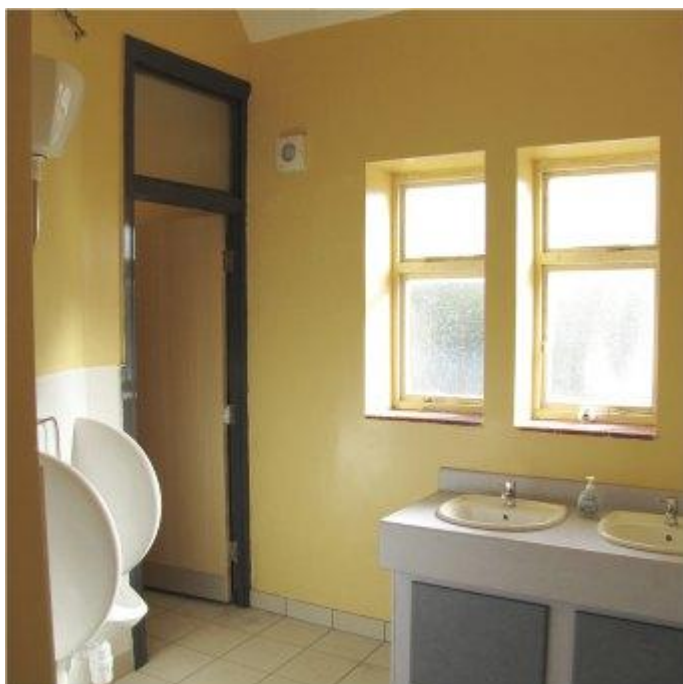


The new Ladies Wash Basins

This will involve a lot of cutting, bashing, brick dust and general mayhem !

It will not therefore be practicable or safe for the Hall to be in use during these works.

Accordingly, we give notice that the Hall will be temporarily closed for the middle two weeks of February.



A view of the new Gents Toilet

This is the period currently anticipated by our builder and architect.

It may be possible for evening meetings and events to continue, but we need to have more detailed information before confirming this, which will be dealt with on a case by case basis.



One of the new Ladies Cubicles

We appreciate that this will not necessarily be good news for some of our users, but we ask your support and understanding as we continue to move forward with the overall project.

If you have specific concerns please contact Dave Darvill and he will endeavour to work towards a solution.

The Hall Toilets:

Again, you must have all noticed, but the new toilets are now fully operational.

We hope you like the pictures!

Further information on any of these items or the Hall Restoration can be obtained by contacting: Dave Darvill 01525 371 836 or Jo Thomson 01525 381 350.

Our Vision: Putting the Community at the heart of what we do

“Linslade Community Hall seeks to become the centre of the community of Linslade and a resource for the wider area of Leighton-Linslade”

Our Aims are to:

- Foster activities that reduce social isolation.
- Offer an affordable accessible social meeting place.
- Nurture a community spirit and to be a focus for community pride.
- Be an economically viable but non -profit making facility.